

ERRATUM

Open Access



Erratum to: Lactosaminated mesoporous silica nanoparticles for asialoglycoprotein receptor targeted anticancer drug delivery

Guilan Quan¹, Xin Pan¹, Zhouhua Wang¹, Qiaoli Wu¹, Ge Li², Linghui Dian³, Bao Chen^{1*} and Chuanbin Wu^{1*}

Erratum to: J Nanobiotechnol
DOI 10.1186/s12951-015-0068-6

Panel A, B, and C from Figure 7 (Fig. 1 here) of this work [1] was generated using HepG2, SMMC7721, and NIH 3T3 cells, respectively. After publication of this work, we noted that they were inadvertently labelled as NIH 3T3, HepG2 and SMMC7721 cells. The figure caption of Figure 7 has now been corrected in this erratum.

Author details

¹ School of Pharmaceutical Sciences, Sun Yat-Sen University, Guangzhou 510006, People's Republic of China. ² Guangzhou Newworld Pharmaceutical Ltd. Co., Guangzhou 510006, People's Republic of China. ³ School of Pharmaceutical Sciences, Guangdong Medical College, Dongguan 523808, People's Republic of China.

The online version of the original article can be found under doi:10.1186/s12951-015-0068-6.

Received: 11 June 2015 Accepted: 11 June 2015
Published online: 30 November 2015

Reference

1. Quan GL, Pan X, Wang ZH, Wu QL, Li G, Dian LH et al (2015) Lactosaminated mesoporous silica nanoparticles for asialoglycoprotein receptor targeted anticancer drug delivery. *J Nanobiotech* 13:7

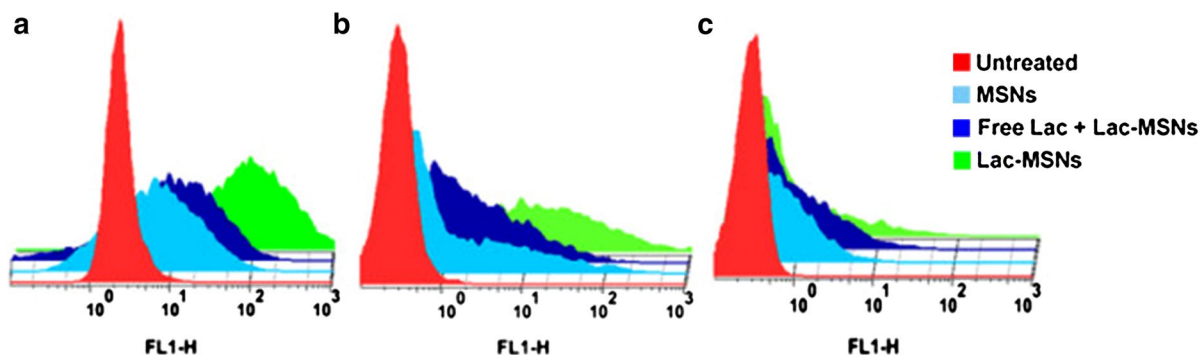


Figure 1 Flow cytometry study. ASGPR-positive cells HepG2 (A) and SMMC7721 (B), and ASGPR-negative cells NIH 3T3 (C) incubated with blank medium (control), Lac-MSNs, MSNs, and excess free lactose with Lac-MSNs for 4 h at 37°C. Data represent mean \pm SD ($n = 3$).

*Correspondence: lsscb@mail.sysu.edu.cn; chuanbin_wu@126.com

¹ School of Pharmaceutical Sciences, Sun Yat-Sen University, Guangzhou 510006, People's Republic of China

Full list of author information is available at the end of the article